

## OC Series high flowrates

*Axial-flow full cone nozzles*



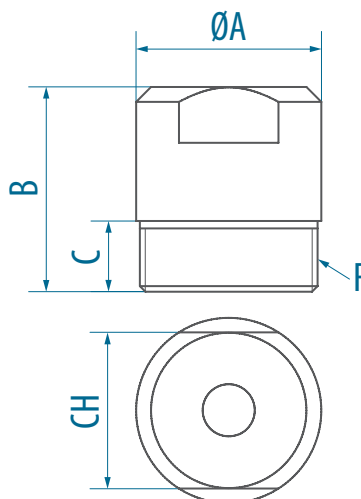
### FEATURES

- Uniform full-cone spray
- Interference fitted swirl-disc



### APPLICATIONS

- Scrubbers
- Fire-fighting systems



Dim.	Thread Code							
	Y07	Y08	Y09	Y10	Y11	Y13	Y15	Y17
F	1 1/4"	1 1/2"	2"	2 1/2"	3"	4"	5"	6"
A	45	50	60	80	90	120	140	170
B	50	55	70	90	90	140	160	180
C	17	19	19	25	30	35	40	45
CH	40	42	50	70	80	100	120	150

## OPERATIVE DATA

ANGLE	Material		Thread								FLOW CODE	Operating curve						
	02	06	Y07	Y08	Y09	Y10	Y11	Y13	Y15	Y17		Flow-rate discharged [l/min] at pressure [bar(g)]						
	AISI 316	Brass	1 1/4" BSP	1 1/2" BSP	2" BSP	2 1/2" BSP	3" BSP	4" BSP	5" BSP	6" BSP	0,5	1	1,5	2	3	5	7	
60°	x	x	x	-	-	-	-	-	-	-	569	42,9	58,6	70,3	80,0	96,0	121	141
	x	x	x	-	-	-	-	-	-	-	580	53,6	73,2	87,9	100	120	151	176
	x	x	-	x	-	-	-	-	-	-	591	67,0	91,5	110	125	150	189	220
	x	x	-	x	-	-	-	-	-	-	604	85,7	117	141	160	192	242	281
	x	x	-	-	x	-	-	-	-	-	615	107	146	176	200	240	302	351
	x	x	-	-	x	-	-	-	-	-	626	134	183	220	250	300	378	439
	x	x	-	-	-	x	-	-	-	-	638	171	234	281	320	384	483	562
	x	x	-	-	-	x	-	-	-	-	650	214	293	351	400	480	604	703
	x	x	-	-	-	-	x	-	-	-	661	268	366	439	500	600	755	879
	x	x	-	-	-	-	x	-	-	-	673	338	461	554	630	756	952	1107

ANGLE	Material		Thread							FLOW CODE	Operating curve							
	02	06	Y07	Y08	Y09	Y10	Y11	Y13	Y15		Y17	Flow-rate discharged [l/min] at pressure [bar(g)]						
	AISI 316	Brass	1 1/4" BSP	1 1/2" BSP	2" BSP	2 1/2" BSP	3" BSP	4" BSP	5" BSP		6" BSP	0,5	1	1,5	2	3	5	7
90°	x	x	x	-	-	-	-	-	-	-	<b>580</b>	53,6	73,2	87,9	<b>100</b>	120	151	176
	x	x	x	-	-	-	-	-	-	-	<b>591</b>	67,0	91,5	110	<b>125</b>	150	189	220
	x	x	-	x	-	-	-	-	-	-	<b>604</b>	85,7	117	141	<b>160</b>	192	242	281
	x	x	-	x	-	-	-	-	-	-	<b>615</b>	107	146	176	<b>200</b>	240	302	351
	x	x	-	-	x	-	-	-	-	-	<b>626</b>	134	183	220	<b>250</b>	300	378	439
	x	x	-	-	x	-	-	-	-	-	<b>638</b>	171	234	281	<b>320</b>	384	483	562
	x	x	-	-	-	x	-	-	-	-	<b>650</b>	214	293	351	<b>400</b>	480	604	703
	x	x	-	-	-	x	-	-	-	-	<b>661</b>	268	366	439	<b>500</b>	600	755	879
	x	x	-	-	-	-	x	-	-	-	<b>673</b>	338	461	554	<b>630</b>	756	952	1107
	x	x	-	-	-	-	x	-	-	-	<b>685</b>	429	586	703	<b>800</b>	960	1208	1406
	x	x	-	-	-	-	-	x	-	-	<b>696</b>	536	732	879	<b>1000</b>	1200	1510	1757
	x	x	-	-	-	-	-	x	-	-	<b>707</b>	670	915	1098	<b>1250</b>	1500	1888	2197
	x	x	-	-	-	-	-	-	x	-	<b>720</b>	857	1171	1406	<b>1600</b>	1920	2417	2812
	x	x	-	-	-	-	-	-	-	x	<b>731</b>	1072	1464	1464	<b>2000</b>	2400	3021	3514
x	x	-	-	-	-	-	-	-	-	<b>742</b>	1340	1830	2196	<b>2500</b>	3000	3776	4393	
x	x	-	-	-	-	-	-	-	-	<b>754</b>	1715	2343	2811	<b>3200</b>	3841	4833	5623	
120°	x	x	x	-	-	-	-	-	-	-	<b>580</b>	53,6	73,2	87,9	<b>100</b>	120	151	176
	x	x	x	-	-	-	-	-	-	-	<b>591</b>	67,0	91,5	110	<b>125</b>	150	189	220
	x	x	-	x	-	-	-	-	-	-	<b>604</b>	85,7	117	141	<b>160</b>	192	242	281
	x	x	-	x	-	-	-	-	-	-	<b>615</b>	107	146	176	<b>200</b>	240	302	351
	x	x	-	-	x	-	-	-	-	-	<b>626</b>	134	183	220	<b>250</b>	300	378	439
	x	x	-	-	x	-	-	-	-	-	<b>638</b>	171	234	281	<b>320</b>	384	483	562
	x	x	-	-	-	x	-	-	-	-	<b>650</b>	214	293	351	<b>400</b>	480	604	703
	x	x	-	-	-	x	-	-	-	-	<b>661</b>	268	366	439	<b>500</b>	600	755	879
	x	x	-	-	-	-	x	-	-	-	<b>673</b>	338	461	554	<b>630</b>	756	952	1107
	x	x	-	-	-	-	x	-	-	-	<b>685</b>	429	586	703	<b>800</b>	960	1208	1406
	x	x	-	-	-	-	-	x	-	-	<b>696</b>	536	732	879	<b>1000</b>	1200	1510	1757
	x	x	-	-	-	-	-	-	x	-	<b>707</b>	670	915	1098	<b>1250</b>	1500	1888	2197
	x	x	-	-	-	-	-	-	-	x	<b>720</b>	857	1171	1406	<b>1600</b>	1920	2417	2812
	x	x	-	-	-	-	-	-	-	-	<b>731</b>	1072	1464	1757	<b>2000</b>	2400	3021	3514
x	x	-	-	-	-	-	-	-	-	<b>742</b>	1340	1830	2196	<b>2500</b>	3000	3776	4393	
x	x	-	-	-	-	-	-	-	-	<b>754</b>	1715	2343	2811	<b>3200</b>	3841	4833	5623	